



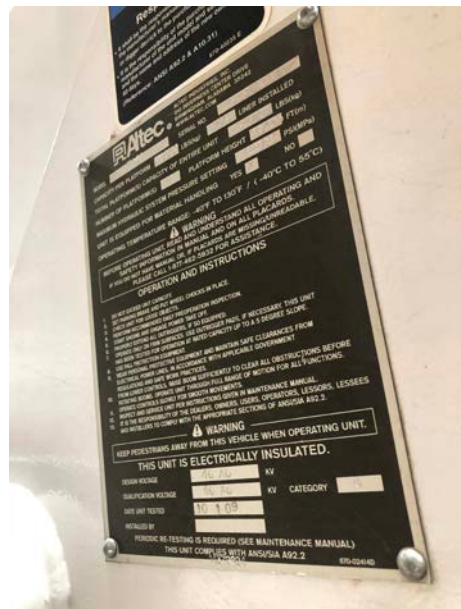
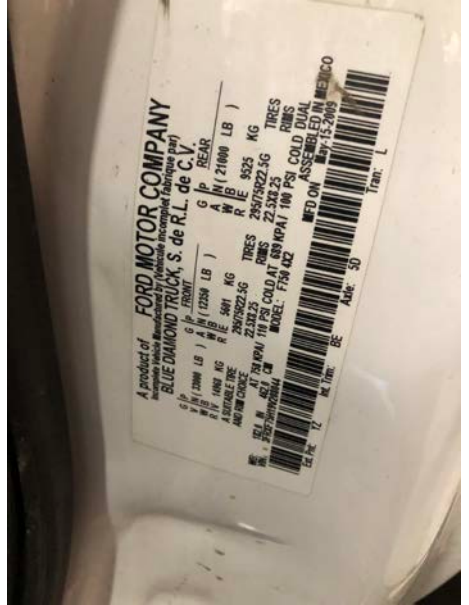
Sealed Bid Auction

Truck Year: **2009** Make: **Ford** Model: **F-750 XL SUPER DUTY 4X2**
Miles: **93,542** Color: **White** Engine: **Cummins Diesel** Transmission: **Allison**
Bucket: **Altec TA60** Platform Height: **60'** Platform Capacity: **600 lbs**
Hour Meter: **5,055** Hydraulic Hour Meter: **6,141**

Features: **Cone Holder, Backup Camera, Backup Alarm, Beacons, Inverter, Spotlights**

Bids must be enclosed in a sealed envelope and delivered to Attn: Shannon Thom, HCREMC, 3400 S. State Rd. 3, New Castle, IN by 3:00pm Friday May 14, 2021. Bids will be opened at that time. No bid changes in person during the opening.

Minimum bid \$20000





Sealed Bid Auction

Truck Year: **2009** Make: **Ford** Model: **F-750 XL SUPER DUTY 4X2**

Miles: **70,292** Color: **White**

Engine: **Cummins Diesel** Transmission: **Allison**

Features: **Winch, Cone Holder, Backup Camera, Backup Alarm, Beacons, Inverter, Spotlights**

Bids must be enclosed in a sealed envelope and delivered to Attn: Shannon Thom, HCREMC, 3400 S. State Rd. 3, New Castle, IN by 3:00pm Friday May 14, 2021. Bids will be opened at that time. No bid changes in person during the opening.

Minimum bid \$15000



FORD MOTOR COMPANY
 A product of
 Incomplete Vehicle, Manufactured by (véhicule incomplet fabriqué par)
BLUE DIAMOND TRUCK, S. de R.L. de C.V.

G P	FRONT	G P	REAR
W B	13800 LB	A	IN (21000 LB)
R I	1480 KG	W B	925 KG
A	SUITABLE TIRE	R I	295/75R22.5G
AND CH	CHOICE	RIMS	22.5X2.25
		AT 538 KPA/110 PSI COLD AT 689 NPA/100 PSI COLD DUAL	
		MODEL: F150 4X2	MFD ON Jun-26-2008

WB: 178.0 IN 447.0 CM
 VIN: F00T5F7M1000000

Ext. Pnt: T2 Int. Trm: HE Axle: 5D Tran: A

